

The Olympic Line

Vancouver's 2010 Streetcar

January 21 - March 21, 2010



BOMBARDIER

Staging an Olympic Games



BOMBARDIER

- The biggest event in Vancouver's history
- A new Olympic transportation system sharing our road network
- Unique Games environment
- Temporary traffic changes for up to 60 days
- Increased Demand of 30%
- Reduced Road Capacity of 20%



The Olympic Line - Vancouver's 2010 Streetcar

- ➔ Modern streetcar service between:
Olympic Village at Canada Line
station and Granville Island
- ➔ Operational from January 21st to March
21st, 2010



Bombardier and the XXI Olympic Winter Games

- ➔ Official Supporter of 2010 Vancouver
Olympic and Paralympic Games
- ➔ Official designer and manufacturer of
Olympic torch
- ➔ Partner with the City of Vancouver for the
Olympic Line Streetcar Demonstration



Olympic Line: Investment Partners



CITY OF VANCOUVER

Provision of track infrastructure & maintenance




Granville Island

Canada Mortgage & Housing Corporation (CMHC)
Funding for infrastructure




BOMBARDIER

Provision of 2 FLEXITY vehicles & O&M services





Brussels Transport Company (STIB)
Loan of 2 FLEXITY vehicles

Bringing Back the Streetcar



CITY OF VANCOUVER

BOMBARDIER

For almost 70 years, Vancouver had an extensive electric streetcar network

Vision for Downtown Streetcar

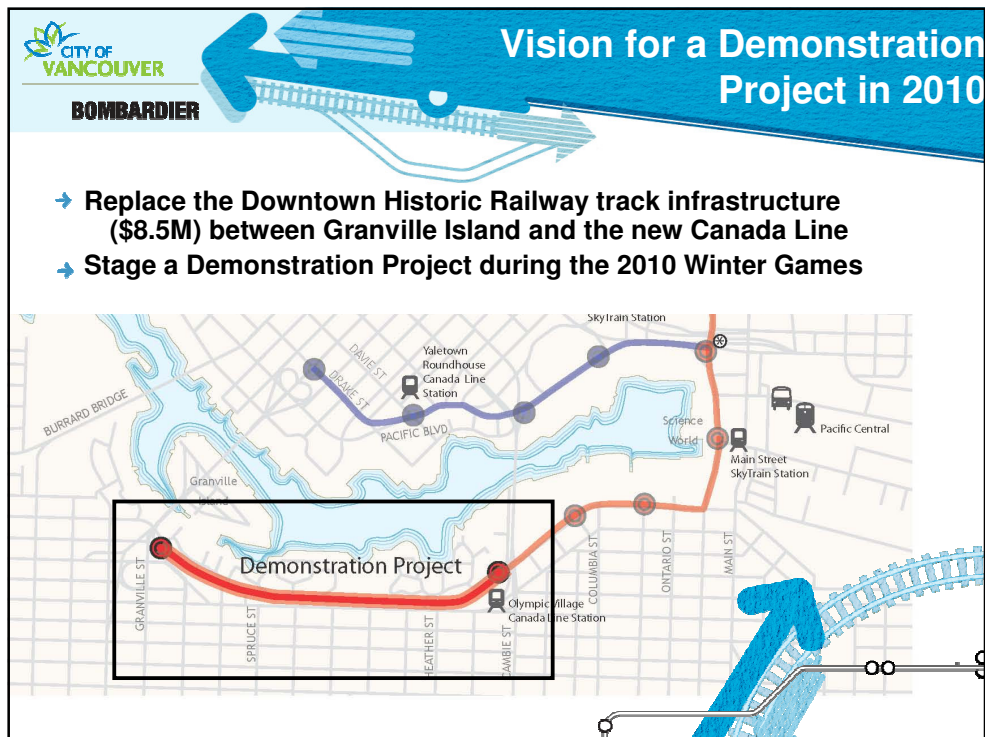
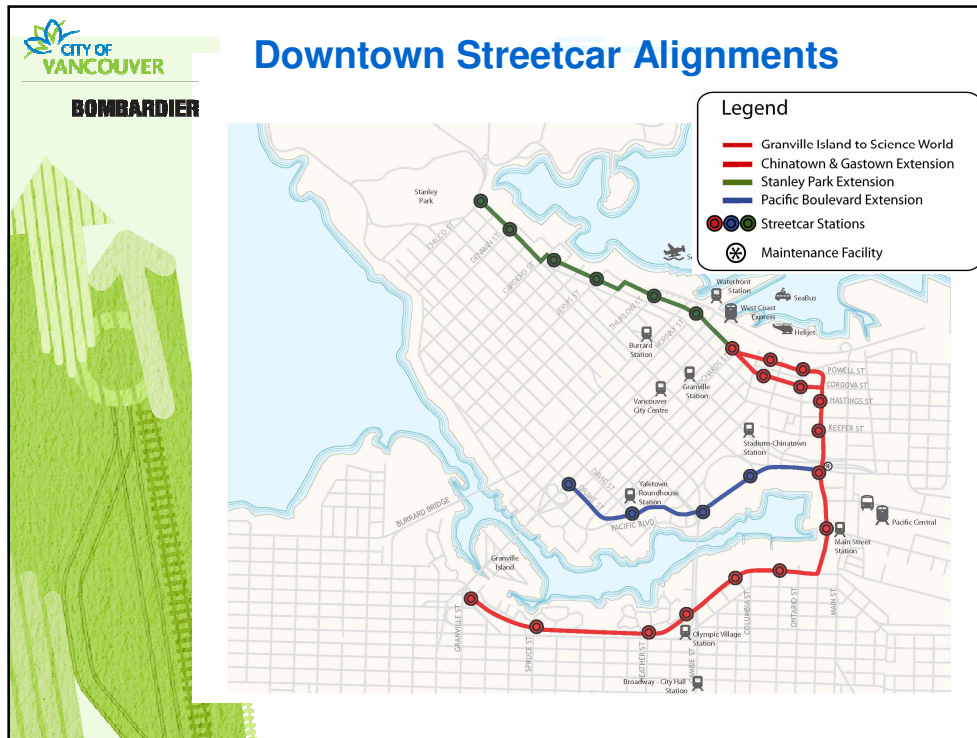
- Modern, high quality, fully accessible transit system
- To support land-use Downtown with less need for vehicles
- Fully integrated with the regional public transportation network



The Olympic Line is a First Step

- A modern and exciting transit experience for Vancouver residents and visitors
- An important first step in realizing the City of Vancouver's vision for the future of the streetcar – a clean, sustainable public transit option for which the day has once again come.



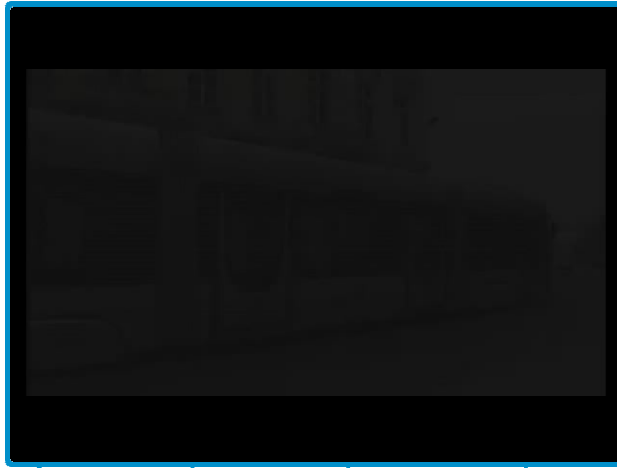




Meet Vancouver's 2010 Olympic Line Streetcar



BOMBARDIER



Brussels Streetcar – Exterior Design



BOMBARDIER



Brussels Streetcar – Interior Design



BOMBARDIER

- Uses materials such as wood, stainless steel and leather
- Comfortable, unified style to attract new riders
- Large windows



FLEXITY Vehicle Statistics



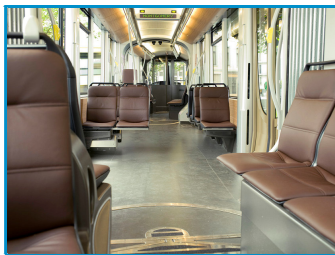
BOMBARDIER

Model	bi-directional
Length of vehicle	32 m
Height	3.4 m
Width	2.3 m
Percentage of low-floor area	100%
Electric double-sliding doors	5 per side
door clearance width	1,300 mm
Electric single-sliding doors	1 per side
Door clearance width	650 mm
Aisle width	630 mm
Maximum speed	70 km/h
Passenger capacity	178
Seated passengers	50
Standing passengers (4 pass./m ²)	128
Bicycle, pram and wheel chair locations	2



High Performer: BOMBARDIER BRUSSELS FLEXITY

- Enhanced passenger comfort
 - High ride quality
 - Low noise
 - Air conditioning
- Improved energy efficiency



Operational Data

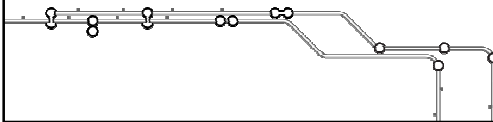
- 60 days of demonstration operation:
 - January 21 - March 21, 2010
- Free service to the public:
 - 18 hours per day, 7 days per week
- Anticipated ridership: 500,000+ passengers
- Two streetcars in single track operation with passing lane
- 2 stations – Granville Island and Canada Line Olympic Village
- 1.8 km of track
- Operation at 6 to 7-minute headways
- Capacity of 1,500 pphpd

Key Dates



BOMBARDIER

- ➔ November 3, 2009 – Streetcars depart Europe on ship
- ➔ December 08, 2009 – Delivery of the streetcars to Vancouver
- ➔ December 09, 2009 to January 20, 2010 – Testing and commissioning of the streetcars on the Olympic Line
- ➔ January 21, 2010 – Official Opening of the Olympic Line
- ➔ January 21, 2010 to March 21, 2010 – Olympic Line operation



www.vancouverstreetcar.bombardier.com



BOMBARDIER

BOMBARDIER

VANCOUVER'S 2010 STREETCAR



The Streetcar Returns to Vancouver



BOMBARDIER
OFFICIAL SUPPORTER
SUPPORTER OFFICE

© Bombardier 1997-2009. TM © 2009, VANCOUVER
Terms of Use | Trademarks | Privacy Policy